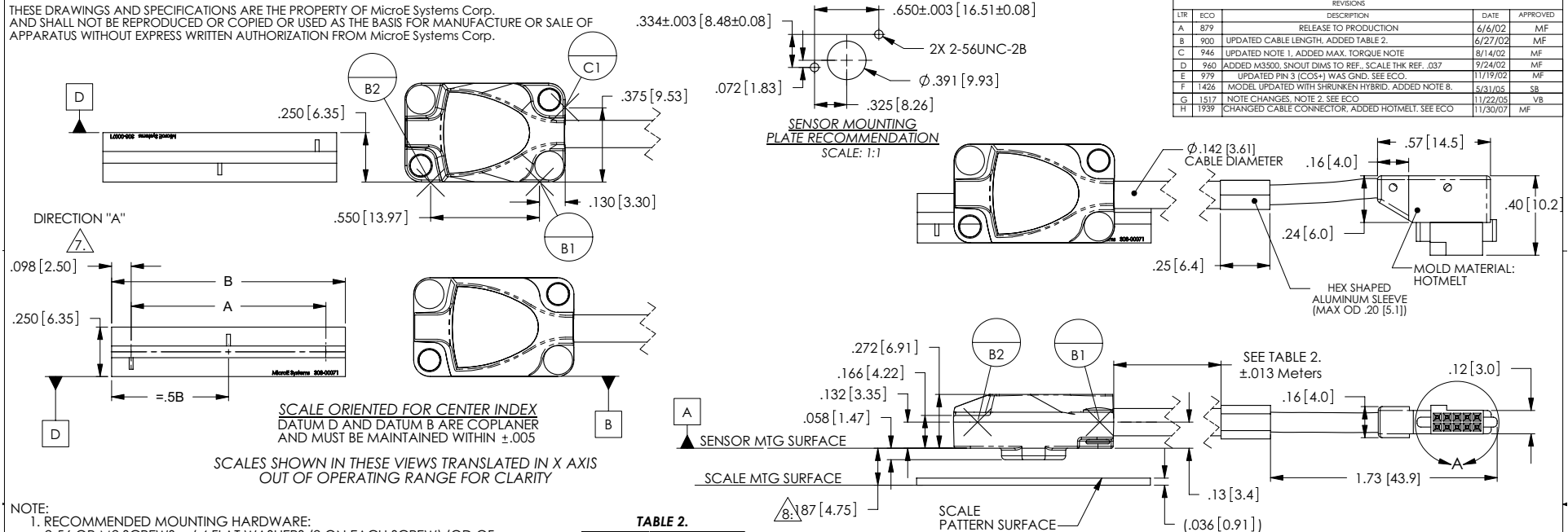


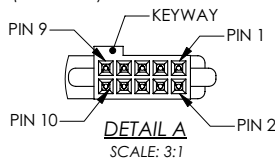
Mercury 2000, 3000 & 3500 Encoder System Interface Drawing: Short Linear Scales

THESE DRAWINGS AND SPECIFICATIONS ARE THE PROPERTY OF MicroE Systems Corp. AND SHALL NOT BE REPRODUCED OR COPIED OR USED AS THE BASIS FOR MANUFACTURE OR SALE OF APPARATUS WITHOUT EXPRESS WRITTEN AUTHORIZATION FROM MicroE Systems Corp.



- NOTE:**
1. RECOMMENDED MOUNTING HARDWARE:
2-56 OR M2 SCREWS w/ 4 FLAT WASHERS (2 ON EACH SCREW) (OD OF WASHER NOT TO EXCEED .150 [3.81]).
MAX. TORQUE: 3.3 in. lbs
 2. FOR APPLICATIONS USING THE SMARTPRECISION ELECTRONICS THIS CONNECTOR (FCI p/n 87012-605 or SAMTEC p/n SFM-105-03-S-D) IS INSIDE THE ENCLOSURE (see interface drawings). ADDITIONAL STRAIN RELIEF MUST BE PROVIDED IF MICROE SUPPLIED ELECTRONICS IS NOT USED.
RECOMMENDED MATING CONNECTOR: FCI p/n 87407-105/SAMTEC p/n TFM series OR EQUIVALENT.
 3. IF BENCHING PINS ARE TO BE USED, PINS MUST BE PLACED ALONG DATUM EDGES OF BOTH THE SENSOR AND THE SCALE FOR PROPER ALIGNMENT. (REFERENCE DATUMS B1, B2 AND C1 FOR SENSOR BENCHING PINS)
 4. HEIGHT OF SENSOR BENCHING PINS MUST BE A MINIMUM OF .170 [4.32] IN HEIGHT FROM DATUM A.
 5. HEIGHT OF SCALE BENCHING PINS NOT TO EXCEED THE THICKNESS OF THE SCALE.
 6. RECOMMENDED SENSOR MOUNTING PLATE THICKNESS:
MINIMUM- 4 SCREW THREADS
MAXIMUM- ALLOW CLEARANCE TO SCALE AND SCALE MOUNTING HARDWARE (BENCHING SURFACES, CLAMPS, HUBS, ETC.)

SEE TABLE 1. FOR PINOUT FUNCTIONS (SEE NOTE 2)



7. WHEN SCALE MOVES IN DIRECTION "A" WITH RESPECT TO A STATIONARY READHEAD, OUTPUT SIGNAL COS+/B+ (PIN 5/PIN 9) LEADS OUTPUT SIGNAL SIN+/A+ (PIN 1/PIN 5).

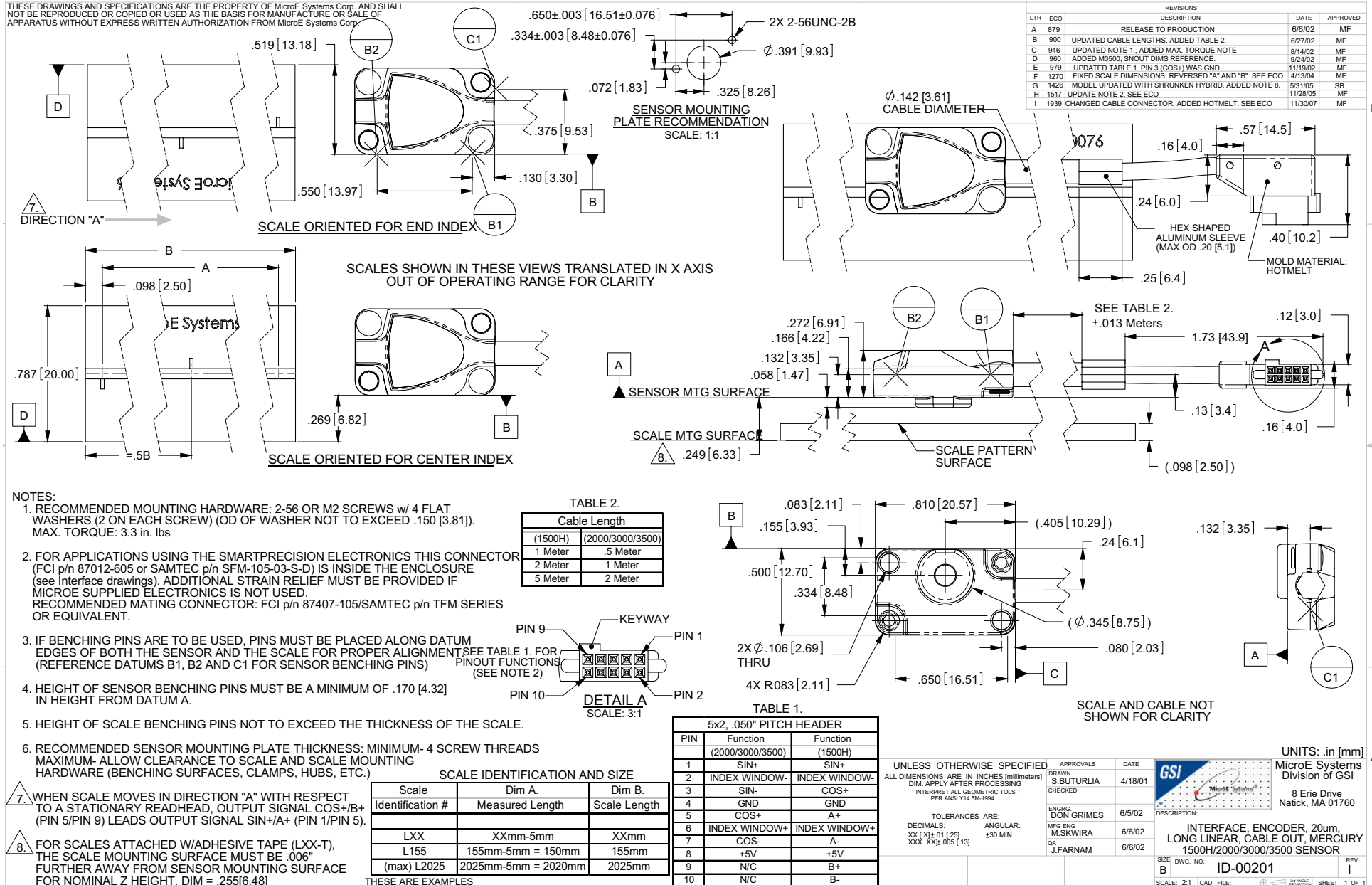
8. FOR SCALES ATTACHED WITH ADHESIVE TAPE (LXX-T), THE SCALE MOUNTING SURFACE MUST BE .006" FURTHER AWAY FROM SENSOR MOUNTING SURFACE FOR NOMINAL Z HEIGHT. DIM = .193 [4.90]

THESE ARE EXAMPLES

Mercury 2000, 3000 & 3500 Encoder System

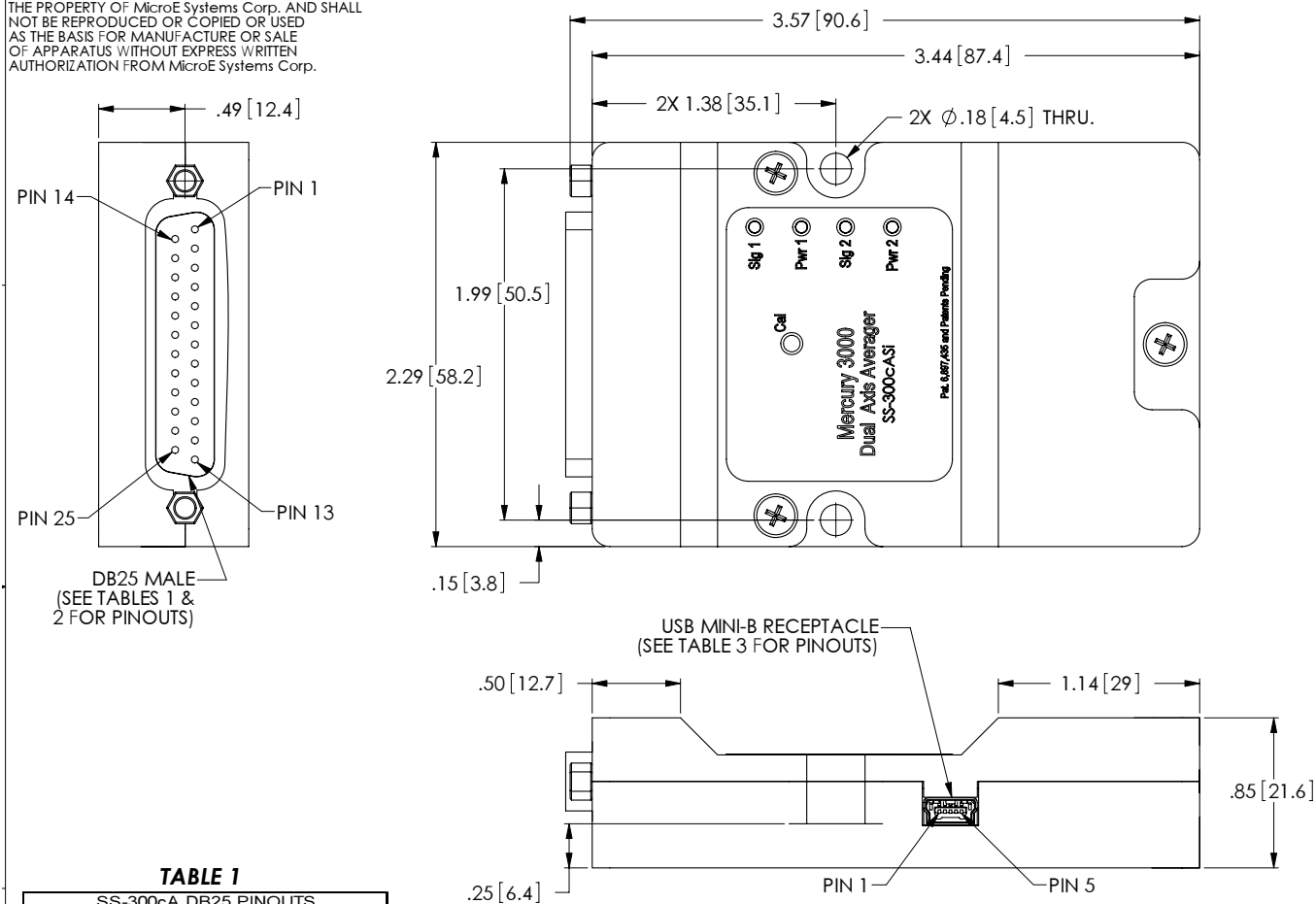
Interface Drawing: Long Linear Scales

THESE DRAWINGS AND SPECIFICATIONS ARE THE PROPERTY OF MicroE Systems Corp. AND SHALL NOT BE REPRODUCED OR COPIED OR USED AS THE BASIS FOR MANUFACTURE OR SALE OF APPARATUS WITHOUT EXPRESS WRITTEN AUTHORIZATION FROM MicroE Systems Corp.



Mercury 3000 Dual Axis Averager
Interface Drawing: SmartPrecision Electronics Module (Interpolator)

THESE DRAWINGS AND SPECIFICATIONS ARE THE PROPERTY OF MicroE Systems Corp. AND SHALL NOT BE REPRODUCED OR COPIED OR USED AS THE BASIS FOR MANUFACTURE OR SALE OF APPARATUS WITHOUT EXPRESS WRITTEN AUTHORIZATION FROM MicroE Systems Corp.



REVISIONS				
LTR	ECO	DESCRIPTION	DATE	APPD
S1		PRELIMINARY	3/29/04	
S2	1397	ADDED DIMENSIONS, NOTES, TABLES 1, 2 & 3 AND DETAILS FOR MOUNTING SCREWS AND THRU HOLES.	2/16/05	SB
A	1727	RELEASE TO PRODUCTION	11/13/06	SB
B	1847	COVER MODIFIED, CHANGED LENGTH OF JACK SCREWS, ADDED DIMENSIONS, LABEL RESIZED DUE TO COVER CHANGE.	4/3/08	VB

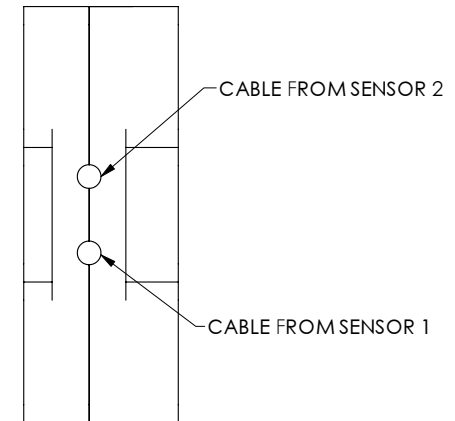


TABLE 2

SS-300cASi DB25 PINOUTS				
1	SD01+	14	SD03-	
2	SD01-	15	CS3+	
3	CS1+	16	CS3-	
4	CS1-	17	SCLK3+	
5	SCLK1+	18	SCLK3-	
6	SCLK1-	19	FBCLK+	
7	SD02+	20	FBCLK-	
8	SD02-	21	TXD/D-	
9	CS2+	22	RXD/D+	
10	CS2-	23	ALARM	
11	SCLK2+	24	+5V	
12	SCLK2-	25	GND	
13	SD03+			

TABLE 1


SS-300cA DB25 PINOUTS			
1	A1+	14	A3-
2	A1-	15	B3+
3	B1+	16	B3-
4	B1-	17	I3+
5	I1+	18	I3-
6	I1-	19	N/C
7	A2+	20	N/C
8	A2-	21	TXD/D-
9	B2+	22	RXD/D+
10	B2-	23	ALARM
11	I2+	24	+5V
12	I2-	25	GND
13	A3+		

TABLE 3

USB CONNECTOR PINOUTS			
1	VBUS	4	N/C
2	D-	5	GND
3	D+		

NOTES:

1. RECOMMENDED MOUNTING HARDWARE 8-32 UNC OR M4 SCREWS WITH FLAT WASHERS (OD OF WASHER NOT TO EXCEED .320[8.13])
2. THIS DRAWING APPLIES TO BOTH MODEL NUMBERS SS-300cA AND SS300-cASi.

UNLESS OTHERWISE SPECIFIED		APPROVALS	DATE	 MicroE Systems Division of GSI 8 Erie Drive Natick, MA 01760	
ALL DIMENSIONS ARE IN INCHES [millimeters] DIM. APPLY AFTER PROCESSING INTERPRET ALL GEOMETRIC TOLS. PER ANSI Y14.5M-1994		DRAWN PAUL DEVINE	1/19/04		
TOLERANCES ARE: DECIMALS: .XX[X] ±.01[.25] XXX[.X] ±.005[.13]		CHECKED			
		ENGRG. CJ	11/13/06		
		MFG ENG THOMAS GARCIA	11/13/06	DESCRIPTION: INTERFACE, INTERPOLATOR, DUAL AXIS AVERAGER	
		CA A. VILLARROEL	11/13/06		
		SIZE B	DWG. NO. ID-00283	REV. B	
		SCALE 1:5	CAD FILE	SHEET 1 OF 1	